



Comune di Canosa di Puglia
Provincia di Barletta Andria Trani

AMBITO PEREQUATIVO AP.AS/R12
DEL P.U.G.

PIANO URBANISTICO ESECUTIVO

COMMITTENTI: *Leonarda Sinesi* CIVITAS s.r.l. *Leonarda Sinesi*
SINESI Leonarda

PROGETTAZIONE: *Giuseppe Bilenchi*
Arch. Giuseppe BILENCHI

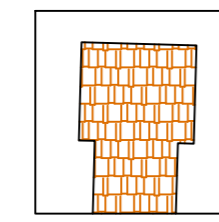
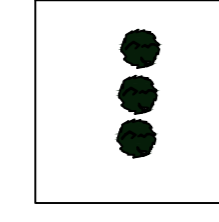
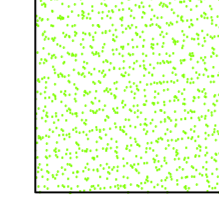
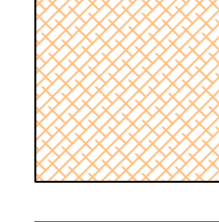
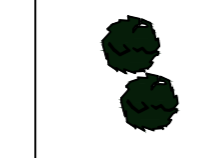
OGGETTO: SCHEMI COMPOSITIVI BLOCCO TIPO TAVOLA: 4.7.ad
DATA: giugno 2023 SCALA 1:200 - 1:500

Commissa	Livello Progetto	Specialistica	Progressivo	File

Rev	Data	Descrizione	Autore

A TERMINI DI LEGGE E' SEVERAMENTE VIETATO RIPRODURRE O COMUNICARE A TERZI IL CONTENUTO DEL PRESENTE ELABORATO

LEGENDA

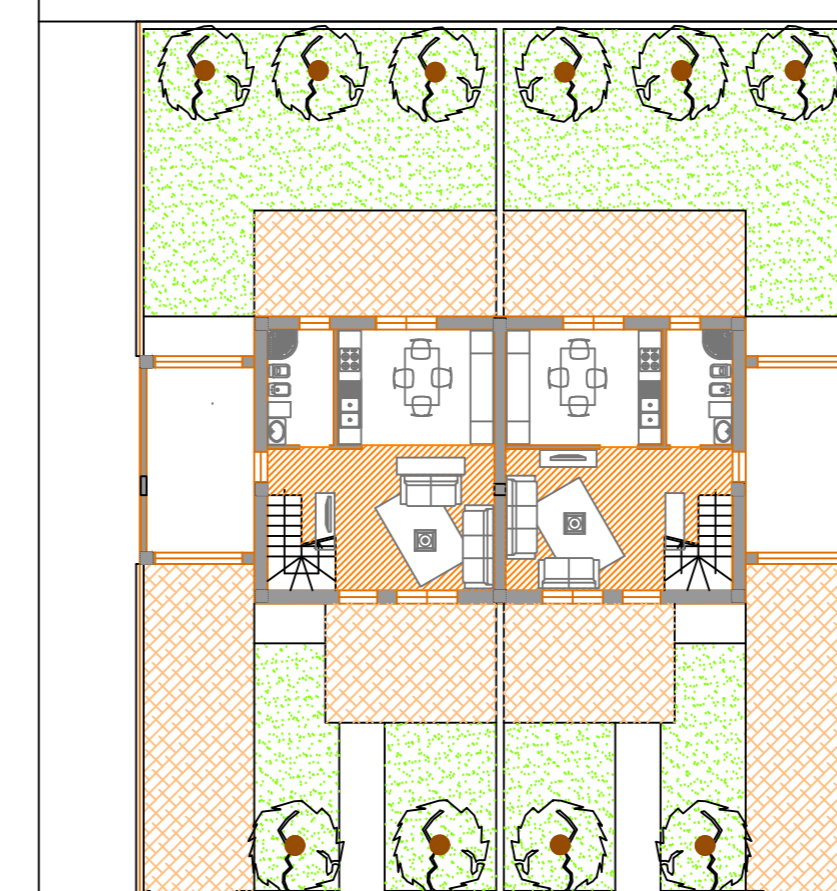
-  FABBRICATI
h. max m. 6,10
-  SIEPI
-  PRATO
-  PAVIMENTO
DRENANTE
-  ALBERI

LOTTO 3

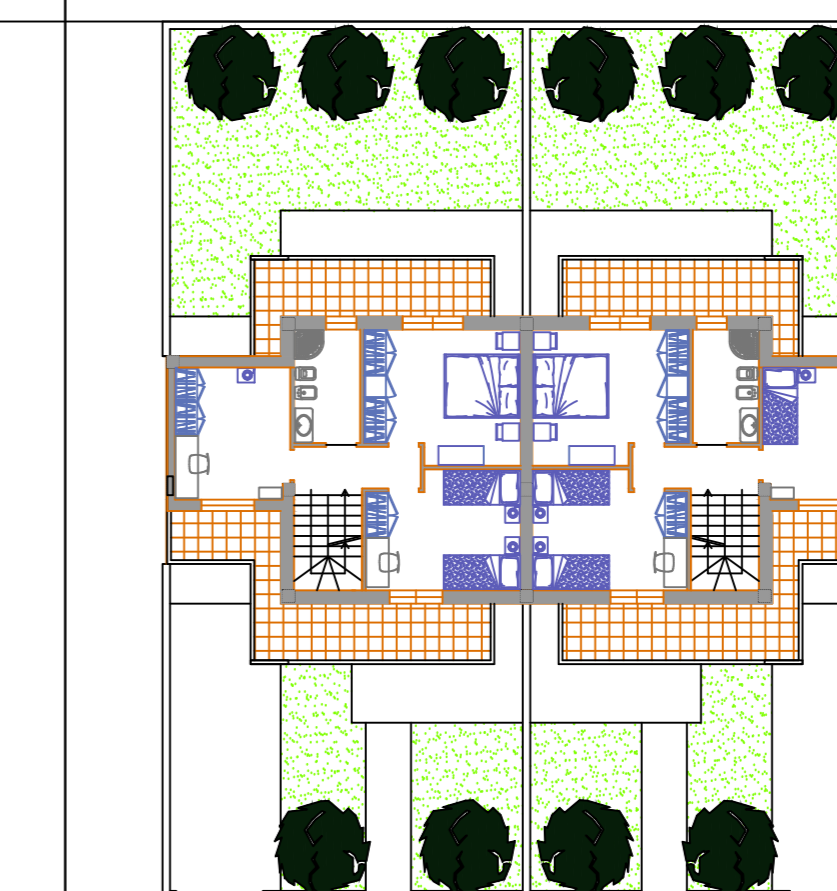
LOTTO 1

LOTTO 2

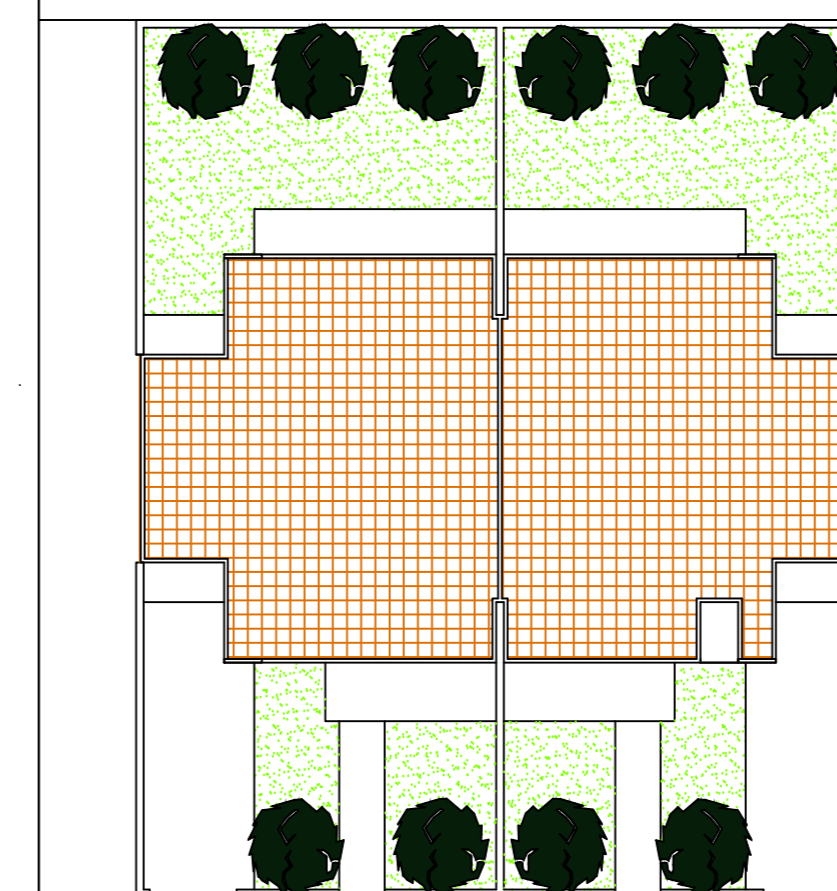
PIANTA PIANO TERRA



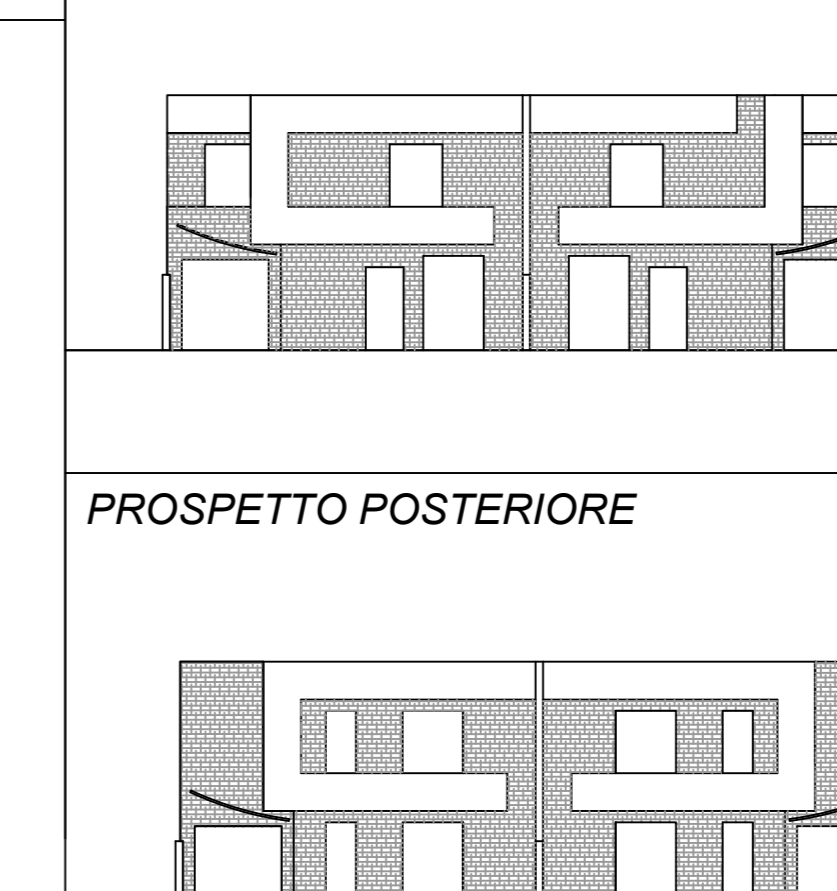
PIANTA PIANO PRIMO



PIANTA COPERTURE



PROSPETTO ANTERIORE



PROSPETTO POSTERIORE

